

September 14th

THE ELEVATION OF THE CROSS

Katavasiae from Orthros

Byzantine Tone 8

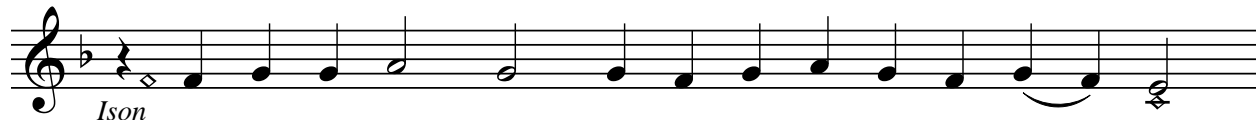
Adapted by Christopher Holwey
from the music of Basil Kazan
(1915-2001)

Ode 1

Ison
Ver - i - ly, Mo - ses hav - ing struck with his rod,___
hor - i - zon - tal - ly, cleav - ing the Red___ Sea and
caus - ing Is - ra - el to cross___ on foot, then hav - ing
struck it trans - verse - ly bring - ing it to - geth - er o - ver
Phar - aoh and his char - i - ots, did trace the Cross,___ thus
sym - bol - iz - ing that in - vin - ci - ble weap - on.
Where - fore, do we praise Christ___ our God,
for that he hath been glo - ri - fied.

Katabasiae of the Cross

Ode 3



Ison

The rod is tak - en as a sym - bol of the mys - t'ry;



for by its bud - ding, it des - ig - nat - eth the Priest.



But now the tree of the Cross_____ hath blos-somed forth with



might and stead - fast - ness to the hith - er - to___ bar - ren Church.

Ode 4



Ison

I have heard,_____ O Lord, of the mys - t'ry of thy___



dis - pen - sa - tion, and have con - tem - plat - ed thy works.



Where-fore, have I glo - ri - fied thy___ God - head.

Katabasiae of the Cross

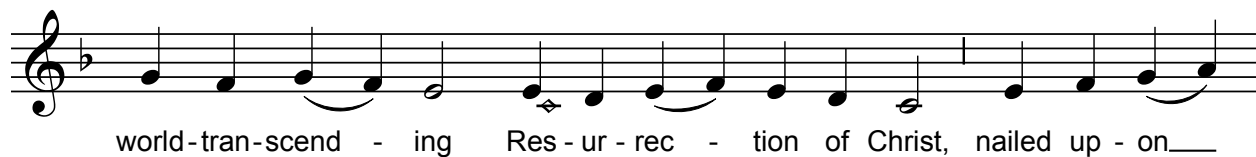
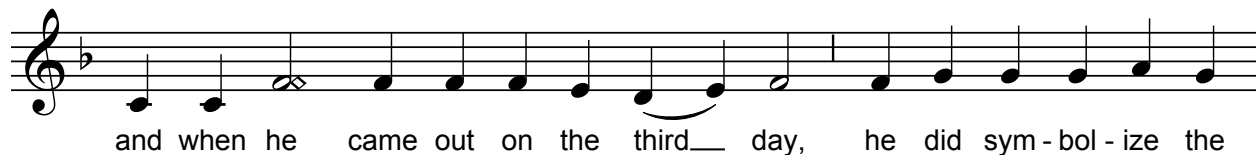
Ode 5

Ison
O thou thrice-bless - ed Tree, where-on the Lord Christ the
King was stretched, and through which he who was be - guiled
by the tree fell, hav - ing been be-guiled by thee, by the
God that was nailed up - on thee in the flesh, who
grant - - eth safe - ty to our souls.

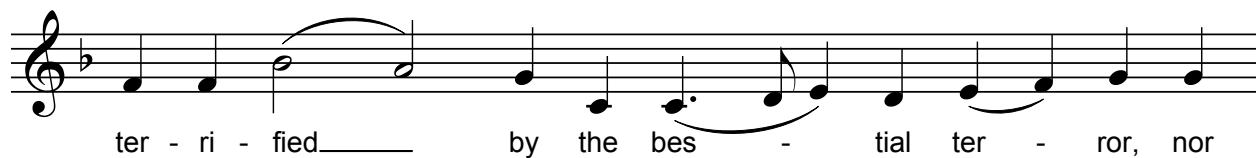
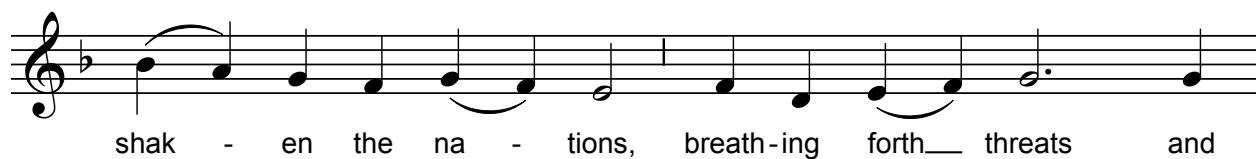
Ode 6

Ison
When Jo - nah in the bel - ly of the whale did
stretch forth his hands in the form of a cross,
he did fore-shad - ow clear - ly the pas - sion of sal-va - tion;

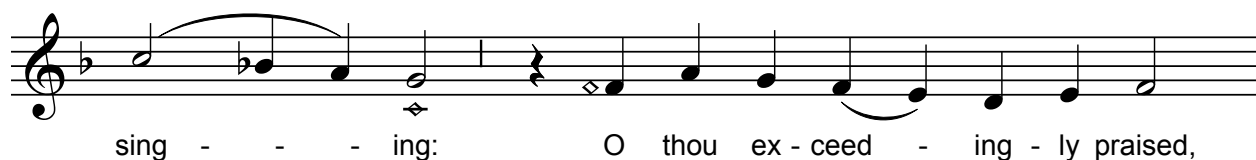
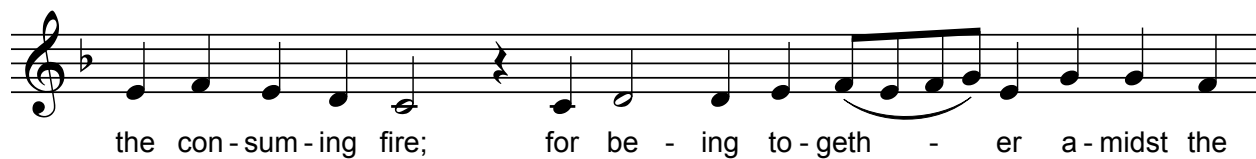
Katabasiae of the Cross



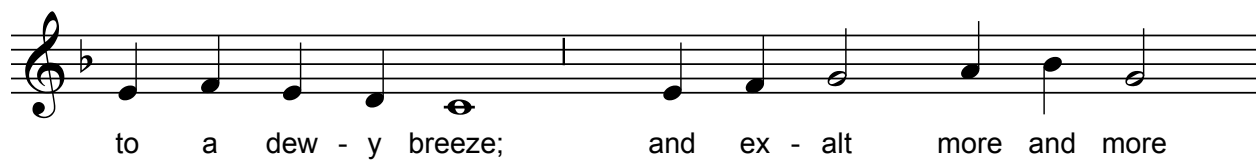
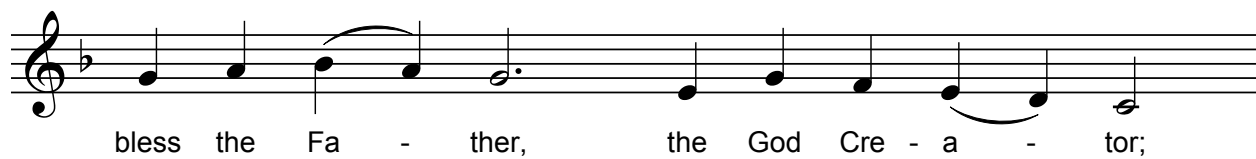
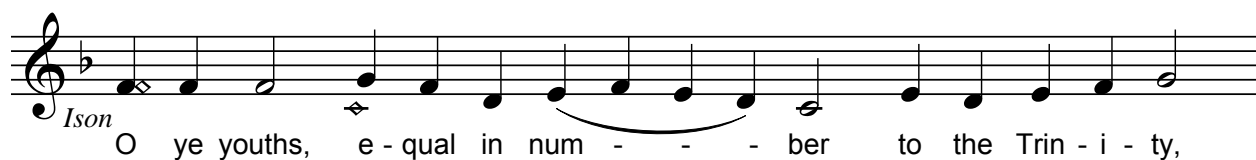
Ode 7



Katabasiae of the Cross



Ode 8



thē all - ho - ly Spir - it, who give - eth life
to - all for - ev - er - more.

Ode 9

Ison Thou art the mys - ti - cal par - a - dise,
O The - o - to - - - kos; for that thou,
be - ing un - tilled, didst bud forth Christ, by whom was
plant - ed on earth the life - giv - ing tree of the Cross.
Where - fore, as we a - dore it be - ing el - e - vat - ed,
we mag - ni - fy thee.